

## **Used By:**

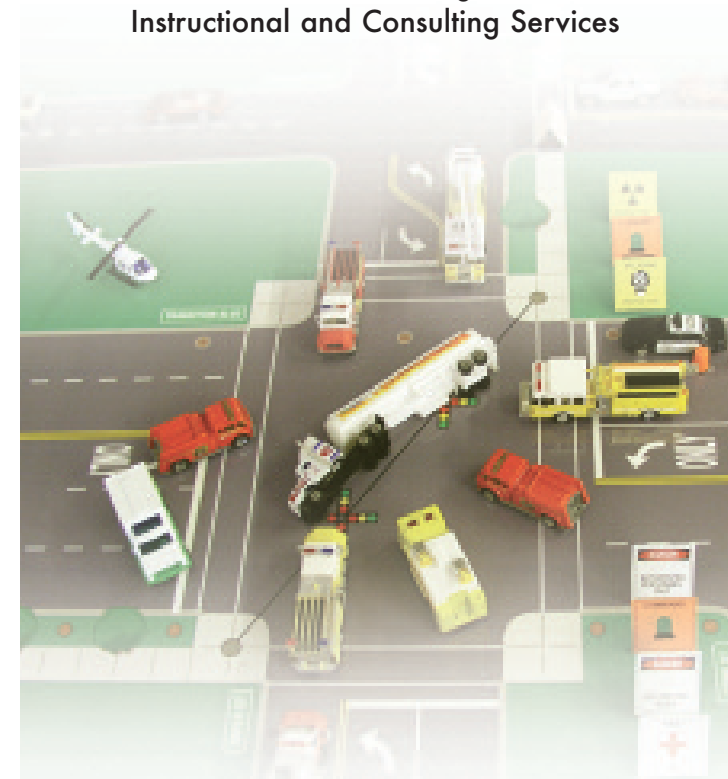
- *Responders*
- *Command Officers*
  - *Instructors*
  - *Facilitators*
- *Local Government*
- *State Government*
- *Federal Government*
- *Support Role Resource*
  - *Private Industries*

## **Designed for the following Training and Operational Tasks:**

- *Highway/Freeway*
  - *Fire/Rescue*
  - *Law Enforcement*
- *EMS-Mass Casualty*
  - *EOC Functions*
- *Special Events Planning*
- *Unified & Area Command*

# **NIMS CITY ICS TABLETOP TRAINING SYSTEM**

Nims-ICS & Disaster  
Training Resources  
ICS/Disaster Management  
Instructional and Consulting Services



*Purchase your tabletop  
training system today!*

ICS Toolbox LLC/ Developed, owned and  
produced by Tom Schwartz, Captain, Fairfax  
County Fire and Rescue Department, Retired

19062 Airport Drive • Melfa, Virginia 23410  
Phone: 757-302-0399 • [info@ics-toolbox.com](mailto:info@ics-toolbox.com)  
[www.ics-toolbox.com](http://www.ics-toolbox.com)

**ICS  
Toolbox**

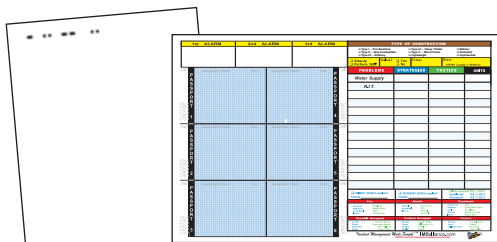
Phone: 757-302-0399 • [www.ics-toolbox.com](http://www.ics-toolbox.com)

# ICS Toolbox presents NIMS City a true table-top training aid.

The training resource center for implementing NIMS-ICS: training aids you can use today to instruct and teach First Responders in the 21st Century.

The NIMS City tabletop ICS training system kit provides training resources to support the instruction of ICS and emergency response planning, special events and drills for: Fire, EMS, Law Enforcement, Public Works, Emergency Management, EOC/ Unified Command, and Highway Incidents.

ICS Toolbox training aids allows first responders and support agencies the opportunity to learn and to remember the ICS process and your agencies Standard Operating Guidelines (SOG's) by providing the best hands-on ICS training aids available in the country. A training aid that your Emergency Service Organization (ESO) owns. It is your training resource for your training program.



▲ WORKSHEETS

ICS Toolbox's NIMS CITY is a great training tool for all emergency service organizations facing the new USDHS-NIMS mandates for ICS training.

## ICS Toolbox Training Aids Help Prevent Death By Powerpoint!

The training resources include large tabletop illustrations that depict an urban downtown roadway, rural interstate, and airport scene on individual 4x8 foot flexible plastic boards suitable for easy transporting and easy setup for training.

Training aid appliances and devices in the ICS toolbox depict ICS titles and command names along with key ICS functional assignments which are provided to ensure "BEST Practice" development of a complete ICS organization on



▲ DEVICES ARE PROVIDED TO BENCHMARK TABLE TOP COMMAND DECISION MAKING

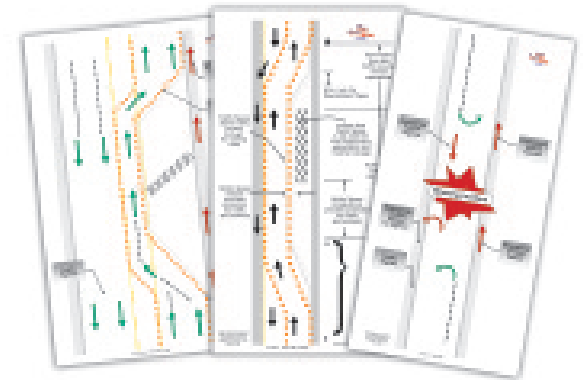


▲ URBAN BOARD

each of the tabletops or separate command board. The Appliance pieces allow students to visually develop an ICS organization on the tabletop.

Old time command and control sand box training methods have been updated to help your training team teach the new NIMS compliant ICS 100, 200, 300 and 400 series courses along with the new mandated Federal Highway Administrations (MUTCD-2003) temporary traffic incident management procedures for ESP's.

We supply the ICS toolbox training aids for your organization. You supply the teaching and coaching to ensure best practice training for your community which makes for best practice response so; "Everyone Goes Home"



▲ TRANSPARENT HIGHWAY INCIDENTS



▲ DRY ERASE/WET WIPE MARKERS CAN BE USED ON LAYOUTS AND DEVICES.

**Mission and goal of ICS Toolbox LLC**  
*"Ensuring that all Responders go home after the call is over!"*